

Specifications

Intel® Celeron® Processor J1900

|   | TWINPOS G5200Ui   | TWINPOS G5200Ui-s   | TWINPOS G5200Vi  |
|---|---|---|--|
| CPU   | Intel® Celeron® J1900 (Up to 2.42 GHz)  |   |  |
| Main memory   | 1st Slot: DDR3L 2GB/4GB<br>2nd Slot: Additional DDR3L 2GB/4GB (Optional)  |   |  |
| Storage   | x1 HDD (500GB); x1 Additional SSD (64GB) (Optional)   |   |  |
| Operating Systems<br>Pre-installed                        | Windows® Embedded POSReady7 (32 bit)/<br>Windows® 10 IoT Enterprise (64 bit)  |   |  |
| Operating Systems Supported<br>(for TWINPOS G5200 w/o OS) | Windows® 7 Professional (32/64 bit) /<br>Windows® 10 IoT Enterprise (64 bit)  |   |  |
| Fan-less  | Yes   |   |  |
| I/O Panel   |   |   |  |
| USB   | x6 (USB2.0) [x1 for 2nd Display or VFD]   |   |  |
| Powered USB   | x1 12V, x1 24V  |   |  |
| COM   | x2 (RJ45)   |   |  |
| Powered COM   | x2 (D-Sub 9pin, male)   |   |  |
| LAN   | x1 (10/100/1000BASE-T)  |   |  |
| Video out   | x1 DVI [for 2nd Display]  |   |  |
| Cash Drawer   | x1 (RJ11)   |   |  |
| DC out  | x1 5V/12V [for 2nd Display]   |   |  |
| Audio   | Line-in/out, Mic/Speaker  |   |  |
| Operator Display  | 15" XGA TFT LCD w/ Resistive Touchscreen  |   |  |
| Customer Display<br>(Optional)                            | 15" XGA TFT LCD for TWINPOS G5200Ui<br>(w/o Touch or w/ Resistive Touchscreen)<br>or 2 x 20 Alphanumeric VFD<br>(mounted on the base unit of<br>TWINPOS G5200Ui or stand-alone) | 15" XGA TFT LCD for TWINPOS G5200Ui-s<br>(w/o Touch or w/ Resistive Touchscreen)<br>or 2 x 20 Alphanumeric VFD<br>(mounted on the base unit of<br>TWINPOS G5200Ui-s or stand-alone) | 15" XGA TFT LCD for TWINPOS G5200Vi<br>(w/o Touch or w/ Resistive Touchscreen)<br>or 2 x 20 Alphanumeric VFD (stand-alone) |
| MSR (Optional)  | ISO Track 1/2/3   |   |  |
| UPS (Optional)  | Yes   |   | No   |
| Base Unit   | Base Unit for<br>TWINPOS G5200Ui  | Base Unit for<br>TWINPOS G5200Ui-s  | Base Unit for<br>TWINPOS G5200Vi   |
| Weight<br>(w/o peripherals)                               | kg  | 9   | 8.4  |
|   | lb  | 20  | 19   |
| Dimensions<br>(W x D x H,<br>w/o peripherals)             | mm  | 357 x 282 x 329   | 358 x 230 x 377  |
|   | in  | 14 x 11 x 13  | 14 x 9 x 15  |
| Power Consumption   | Idle 28.5W / Max. 45.5W   |   |  |
| Power Supply  | Power Supply Unit   |   | AC Adaptor   |
| Color   | Black / White   |   |  |

Specifications and designs are subject to change without prior notice.  
NEC shall not be responsible for technical or editorial errors.  
This product includes limited-life components like HDD, SSD, PSU, FAN, LCD, Touch panel, MSR, VFD and battery.  
The replacement frequency of limited-life parts depends on the usage conditions. Please refer to the installation manual for details.

Why NEC?

NEC Corporation is a leader in the integration of IT and network technologies that benefit businesses and people around the world. By providing a combination of products and solutions that cross utilize the company's experience and global resources, NEC's advanced technologies meet the complex and ever-changing needs of its customers. NEC brings more than 115 years of expertise in technological innovation to empower people, businesses and society.



NEC Global Enterprise Solutions  
for Retail

Corporate Headquarters (Japan)

NEC Corporation  
[www.nec.com](http://www.nec.com)

Configurable Touchscreen POS

TWINPOS G5200



# Configurable Touchscreen POS

NEC has successfully demonstrated its capability to support non-stop store operations through its total retail solutions for more than twenty years.

The new TWINPOS G5200 series provides an extensive lineup of standard, pole-mount, wall-mount, and low-profile models, enabling flexible installation in a variety of store layouts. In addition, the use of a flat display avoids ingress of water drops and dust from the front of the display. Moreover, the new series offers easy maintenance of key components such as the HDD (Hard Disk Drive), RAM (Random Access Memory), and power supply unit.

## Flexible Style

### 4 Installation Choices for Various Store Formats

#### TWINPOS G5200Ui – Standard

The standard configuration fits into a wide variety of industry segments.



#### TWINPOS G5200Ui-s – Small Footprint

This UI-variant model can be installed in spite of space limitations.



#### TWINPOS G5200Vi – VESA Compliant Pole/Wall Mount

Vertical space optimization helps create more horizontal counter space for displaying promotional items or POPs, leading to better customer service.



#### TWINPOS G5200Ei – Flat & Compact

An open space between customers and staff can facilitate better communication.



## Stylish Design

### Enhancing Store Ambience



### White Color Option



#### Long-lasting White

The white housing material with the UV absorbent protects the whiteness of the color for longer periods by preventing a yellowish tint.

## Reliability

### Built-in UPS

- TWINPOS G5200Ui comes with an option of built-in UPS installed in the base unit to ensure continuous operation during momentary power failure.
- It initiates soft-shutdown after power failure.

### Fan-less Operation

- A low heat generating Intel® Celeron® J1900 CPU enables fan-less operation.
- The fan-less operation is especially suitable for environments with dust or oil usage, as well as for noise-sensitive places such as upscale stores or restaurants.

### Solid State Drive (SSD)

- TWINPOS G5200 series offers a reliable and long-life SSD.

### Flat Display

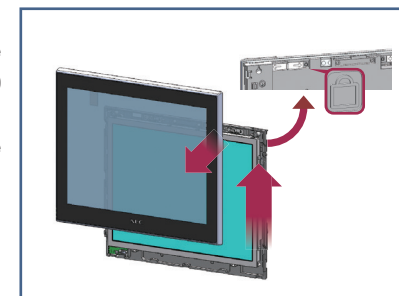
- The flat surface of display is easy to wipe and keeps out dust and spill.



## Maintainability

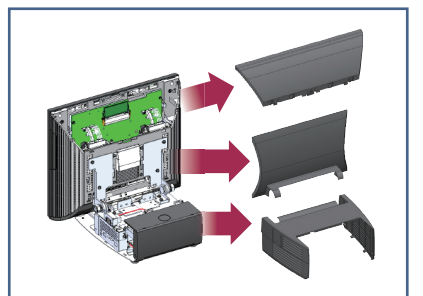
### Touchscreen replacement

Touchscreen replacement can be a pain point for maintenance staff, however, TWINPOS G5200 series allows the touchscreen to be removed by simply sliding the bars.



### Screw-less Covers for Easy Access to Main Parts

Screw-less covers enable instant access to parts with comparatively higher failure rates – the HDD, RAM and power supply unit.



## Platforms

### Enterprise CPUs

TWINPOS G5200 offers a wide range of enterprise CPU options.

The enterprise CPUs have a longer supply period and are more reliable than consumer CPUs.

- Intel® Core™ i5-4570TE (2.7 GHz)
- Intel® Core™ i3-4330TE (2.4 GHz)
- Intel® Celeron® G1820TE (2.2 GHz)
- Intel® Celeron® J1900\* (Up to 2.42 GHz)

\*Low Power Consumption

### Operating Systems

"Windows® 10 IoT Enterprise" and "Windows® Embedded POSReady7" are available.

